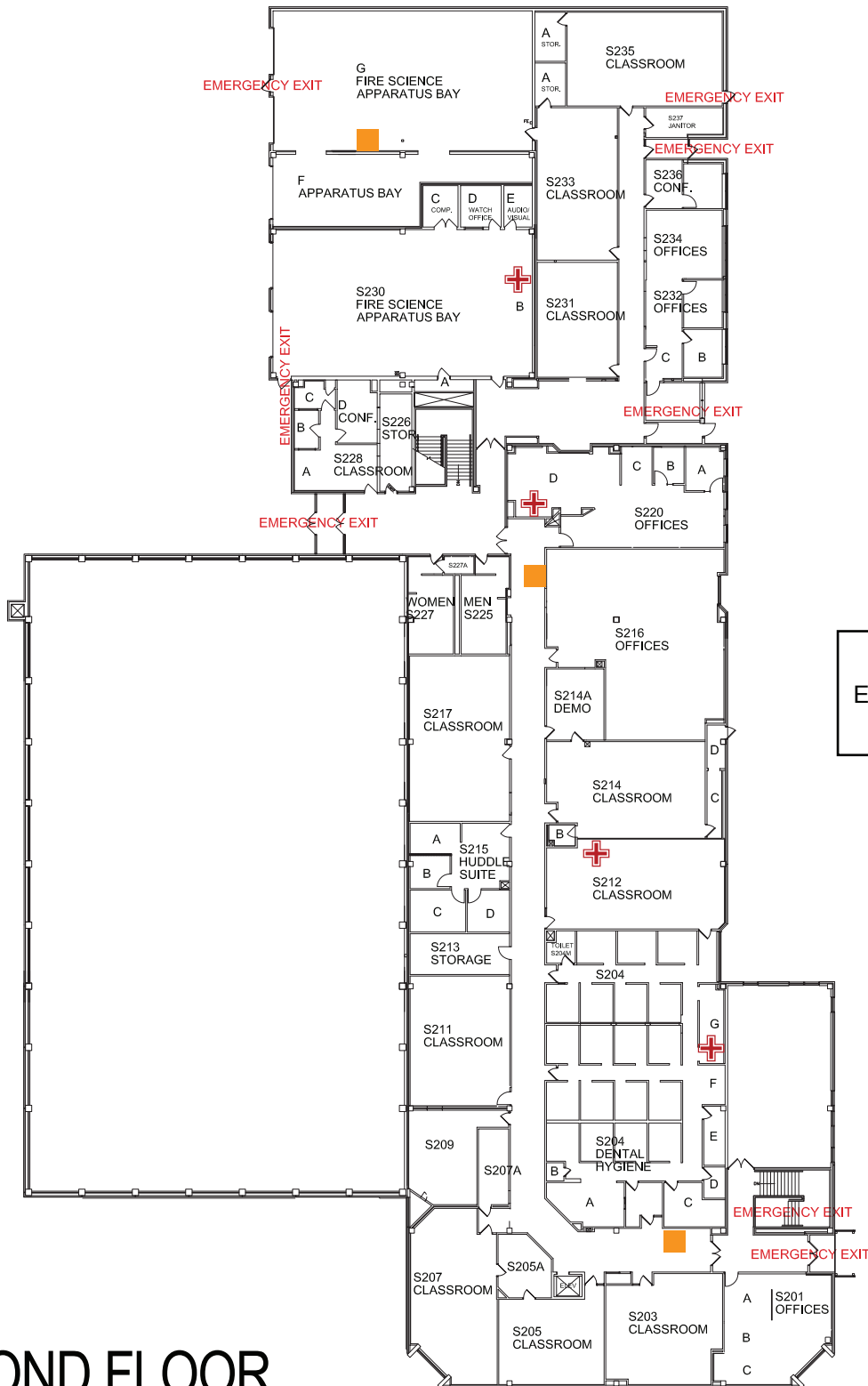


Emergency Evacuation Map

In an Emergency call 911 for Police, Fire and Medical Assistance



KEY

- Shelter Areas
- AED Locations
- You Are Here
- First Aid Kit
- Stair Chair



**FOR SEVERE WEATHER
PROCEED TO THE LOWEST
LEVEL OF THE BUILDING**

In case of fire use stairs
DO NOT use elevators

**S BUILDING
EVACUATION STAGING AREA:
Light Post #50**

SECOND FLOOR
BUILDING S



WAUKESHA
COUNTY TECHNICAL
COLLEGE