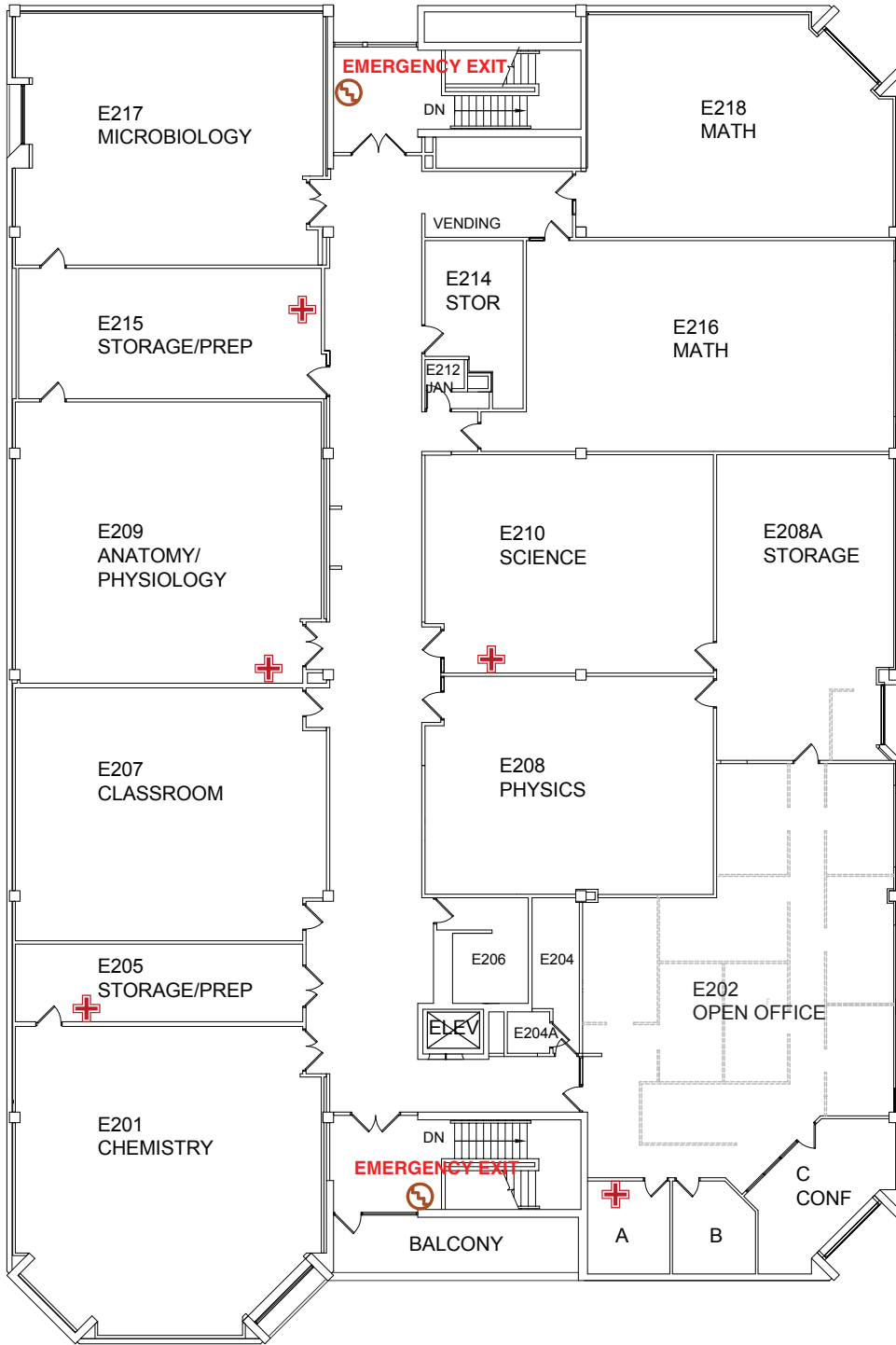


Emergency Evacuation Map

In an Emergency call 911 for Police, Fire and Medical Assistance



KEY	
	Shelter Areas
	AED Locations
	You Are Here
	First Aid Kit
	Stair Chair



E BUILDING
EVACUATION STAGING AREA:
Light Post #1

FOR SEVERE WEATHER
PROCEED TO THE LOWEST
LEVEL OF THE BUILDING

SECOND FLOOR

BUILDING E