



WCTC  
FOUNDATION

# ANNUAL REPORT

July 1, 2024 - June 30, 2025





**WCTC  
FOUNDATION**

## A LETTER FROM THE **EXECUTIVE DIRECTOR**

Dear Friends of the WCTC Foundation,

As I reflect on the past year, I am filled with gratitude and excitement for all we have accomplished together. From July 2024 through July 2025, the generosity of our donors, the dedication of our Board members and the efforts of our volunteers have made a tangible difference in the lives of WCTC students and the communities we serve.

This year, we welcomed Haley Weickardt and Justin Kehring to the Foundation team, strengthening our ability to support students and programs across the College. Together, we launched a capital campaign, hosted meaningful events and connected with students in ways that directly impact their success.

Your contributions have expanded scholarships, funded critical program needs and created opportunities for students to thrive academically and professionally. Thanks to your support, WCTC continues to lead in workforce development, preparing students for meaningful careers while strengthening our region's economy and community.

On behalf of the Foundation and the students we serve, thank you for your generosity, commitment and belief in the power of education. Together, we are making a lasting difference, and I look forward to continuing this important work in the year ahead.

**Thank you for your continued support!**

Sincerely,

**Robyn Ludtke**

Executive Director, WCTC Foundation

A handwritten signature in black ink that reads "Robyn Ludtke".



## MISSION

The mission of the WCTC Foundation is to secure charitable resources to assist WCTC students in achieving their educational goals. Through creativity, enthusiasm and collaboration, these efforts are in partnership with Waukesha County Technical College to foster lifelong learning and workforce development in our community.

## STAFF



**Robyn Ludtke**  
Executive Director



**Justin Kehring**  
Senior Director, Finance  
and Administration



**Haley Weickart**  
Support Assistant

## WCTC FOUNDATION LEGACY COUNCIL

Established in 2023, the Legacy Council is an adjunct group to the WCTC Foundation Board of Directors. The council's purpose is to serve as advocates for the Foundation to the community.

Jeff Mauermann  
Jeremy Schmidt  
Jill Papke  
Jon Wehrli  
Judie Taylor  
Lou Hernandez

Manuel Santos  
Mary Baer  
Megan Tzanoukakis  
Pauline Jaske  
Pete Bacon  
Roxanne Baumann

Stuart Schroeder  
Thorsten Wienss  
Tom Fotsch  
Monica Brusnahan

# 2024-25

## FOUNDATION BOARD OFFICERS

The WCTC Foundation is governed by a volunteer board that gives their time and talent in support of WCTC students. The WCTC Foundation extends its sincere appreciation to each of these leaders for their dedication and support.

### WCTC FOUNDATION EXECUTIVE DIRECTOR

**Robyn Ludtke**

---

### BOARD OF DIRECTORS

**Anita Rodriguez Cordero**

Knowing Deeper, Coaching & Consulting

**Brady Chuckel\*** Secretary

Paul Davis Restoration & Remodeling of Southeast & Fox Valley WI

**Dan Nolde**

Marsh McLennan Agency

**Dan Wolfgram**

Badger Mutual Insurance

**Jan Lennon**

Community Advocate

**Lauren Hess**

Associated Bank

**Margo Lehmann**

Lakeland Supply

**Mary Manning\*** Treasurer

Insight CFO Services

**Nate Zastrow\***

Bank Five Nine

**Nick Dillon**

Believe Wellness Center PLLC

**Philip L. Kubow**

ProHealth Care

**Sandy McGee\*** Chair

Vrakas CPAs + Advisors

**Steve Basilotto**

Froedtert ThedaCare Health, Inc

**Tammy McCormack\*** Vice Chair

Century Companies

**Richard Barnhouse, Ph.D.**

WCTC

**Jamie Stahulak**

WCTC

**Mike Shiels**

WCTC

**Ed Wierzbicki**

WCTC

**Andy Palen**

WCTC

*\*Executive Committee*

---

### WELCOME NEW MEMBERS

 Joined July 1, 2025

**Heidi Gabriel**

Reinhart Boerner Van Deuren s.c.

**Jeff McCarthy**

Bank Five Nine

**John Huggett**

The Boldt Company

**Stephanie Ohlfs**

Waukesha State Bank

---

- We honor the memory of Nate Zastrow and are grateful for his service and commitment to the WCTC Foundation.

# The Future of



**In September 2024, the WCTC Foundation officially launched its capital campaign with an extraordinary show of leadership from Joel Quadracci and his family.**

Their transformational \$1 million commitment set the stage for a powerful message felt across the region and the state. It demonstrated confidence in WCTC, our students and the future of workforce education. Their leadership created immediate momentum, encouraging businesses to rally behind the College and Joel and helping shape both the vision and scale of what this campaign could achieve.

Since that kickoff, the response from our community has been nothing short of inspiring. Over the past several months, support from individuals, businesses and philanthropic partners has continued to grow.

We are proud to share that the campaign has surpassed the halfway mark and remains on track for shovels in the ground in 2026. This progress reflects a shared belief in the impact this project will have on students, employers and the region.

The campaign has also brought forward the generosity and leadership of major partners, including Inpro, Eaton, the Petcoff Foundation, Waukesha State Bank and Trace-A-Matic, along with countless friends of the college. Their support underscores the strong partnership between education and industry and the critical role WCTC plays in preparing a skilled, future-ready workforce.



**DONATE  
ONLINE**



# AI AT WCTC

**\$10,000**

**Champion  
of Progress**

**\$5,000**

**Technology  
Sponsor**

**\$2,500**

**Education  
Sponsor**

**\$1,000**

**Innovation  
Supporter**

**\$500**

**Community  
Supporter**

DONOR RECOGNITION LEVELS

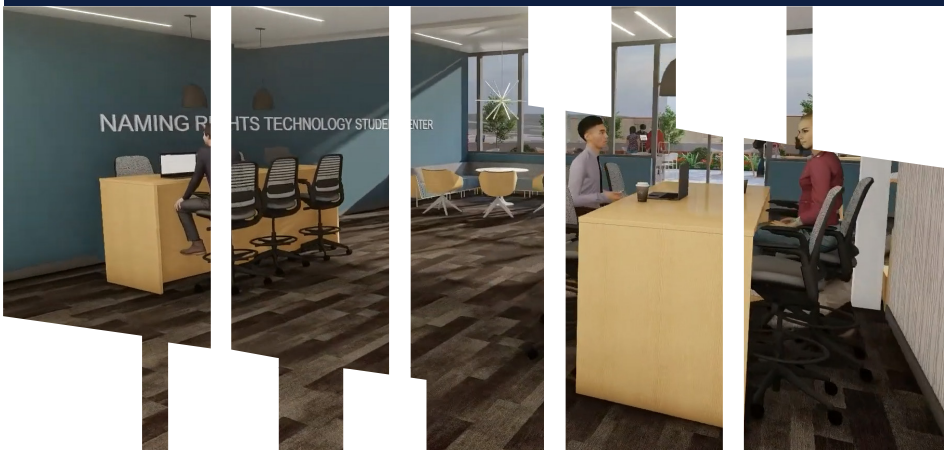


The WCTC Foundation is grateful for Inpro's generous support of the Applied AI Lab's

## **Technology Student Center.**

This investment helps create a space where students can explore emerging technologies, collaborate on innovative ideas and gain the skills needed to succeed in an AI-driven workforce.

Partnerships like this strengthen opportunities for our students and ensure the Applied AI Lab becomes a dynamic hub for learning, discovery and community impact. We sincerely thank Inpro for helping make this vision possible.





**Marc Holland**  
CEO & President  
Inpro

# Inpro Supports AI Learning Through the Technology Student Center

At Inpro, we believe strong communities grow when education, innovation and industry come together. As a Muskego-based manufacturer of architectural building products, we see firsthand how innovation shapes the environments where people live, work and learn. That's why we chose to support the Applied AI Lab at Waukesha County Technical College. As emerging technologies continue to influence industries, initiatives like this help individuals grow while strengthening the community we call home.

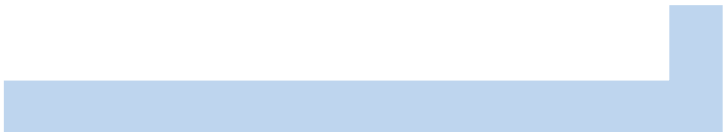
Working with the WCTC Foundation throughout the process has been smooth, collaborative and rewarding, and we look forward to seeing the impact this lab will have on our community. Through this partnership, we aim to build curiosity and confidence around AI and emerging technologies. For students, this means exposure to new ideas and career paths they may not have considered. For working professionals, it offers a way to strengthen skills and apply new knowledge directly in their roles. Together, this supports a workforce that is more adaptable and prepared for what's ahead.



**WCTC stood out as a partner because of its strong connection to local industry and its focus on practical, career-driven education.”**

We're proud to be part of an effort that expands learning and opens doors for people across our region. This partnership reflects Inpro's commitment to supporting education and creating opportunities that can make a lasting difference in people's lives.

The College's proven ability to align learning with workforce needs made the decision clear.



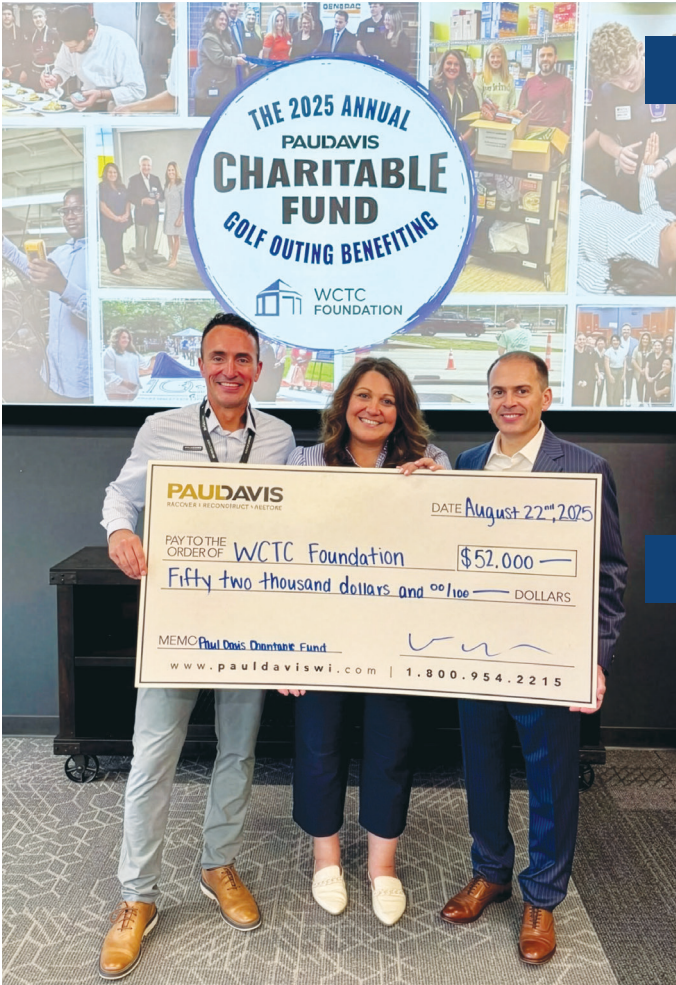
# Paul Davis Charity Golf Outing Supports WCTC Students

In June 2025, more than 200 golfers teed off at Ironwood Golf Course for the annual Paul Davis Charity Golf Outing, benefiting the WCTC Foundation.

The event raised a generous \$52,000 to support **student scholarships**, **campus growth** and the overall **strength of the Foundation**.



The gift will have a direct impact across several areas:



### CAMPUS AND STUDENT SUPPORT

**\$27,000**

Their support helps both students and the growth of the College, providing endowment and scholarship funds to assist with tuition, books and other school-related expenses, while also fostering the expansion of programs such as Kitchen and Bath, Construction Management and the innovative Applied AI Lab. This ensures students gain the skills they need to succeed and it strengthens the College's offerings.

### FOUNDATION SUPPORT

**\$25,000**

This generous gift will help strengthen the WCTC Foundation's ability to support students and the College, providing resources to grow scholarships, enhance fundraising efforts and ensure the foundation can continue making meaningful community impact for years to come.

Throughout the outing, participants learned about WCTC's student success stories, program impact and the College's role in transforming the future workforce, particularly in applied AI, while connecting local talent with regional businesses.

Paul Davis Restoration of Eastern Wisconsin and Northern Illinois demonstrates a strong commitment to the community by supporting the connection between local businesses and the talent pipeline. The foundation extends heartfelt thanks for their investment in education and for helping shape the future of our workforce.



# From Vision to Reality

## How the Generac Foundation Helped Launch WCTC's Simulation Lab

By Kelly Skindzelewski  
Community Programs Manager, Generac



The WCTC Foundation plays a key role in supporting high-impact initiatives that benefit Waukesha County Technical College (WCTC) students and the broader community. By connecting donors to projects that expand learning opportunities and workforce readiness, the Foundation helped make the Generac Human Patient Simulation Lab possible, ensuring this innovative training space would be fully realized and sustainable for years to come.

WCTC has long been recognized as a powerhouse in technical education where hands-on learning meets real world career pathways. So, when the Generac Foundation began shaping its new impact grant program, WCTC quickly emerged as a potential partner. The College's deep expertise, strong student outcomes and direct connection to high-demand professions matched the Foundation's aspirations for meaningful, tangible and

impactful investment. Supporting first responders and education are two primary areas of interest of the Generac Foundation.

At the heart of the WCTC proposal to the Generac Foundation was an opportunity to transform training for first responders and EMS students. With the Foundation's investment, WCTC would purchase 13 advanced simulation manikins, which have state-of-the-art technology designed to mirror real human engagement in emergency situations. These high-fidelity tools enable students to practice procedures, assess patient reactions and hone decision-making skills in realistic, high-pressure scenarios. The result is the newly dedicated Generac Human Patient Simulation Lab, a space where future paramedics, firefighters and EMS professionals gain the confidence and experience they need before they ever encounter a real emergency call.

[DONATE  
ONLINE](#)





For the Generac Foundation, the project embodied all the qualities it hoped for through its impact grant program: a tangible initiative with longevity, broad visibility and a clear benefit to students and the community. In fact, the WCTC partnership has become the gold standard as an example future impact grant projects will be measured against. But the true impact for Generac extends far beyond the lab. Better training leads to better care, and better care strengthens the entire community.

**Every resident of Waukesha County and beyond stands to benefit from the enhanced tools, skills and preparedness of first responders educated at WCTC.**

Thank you to the WCTC Foundation and WCTC for their partnership in the community!



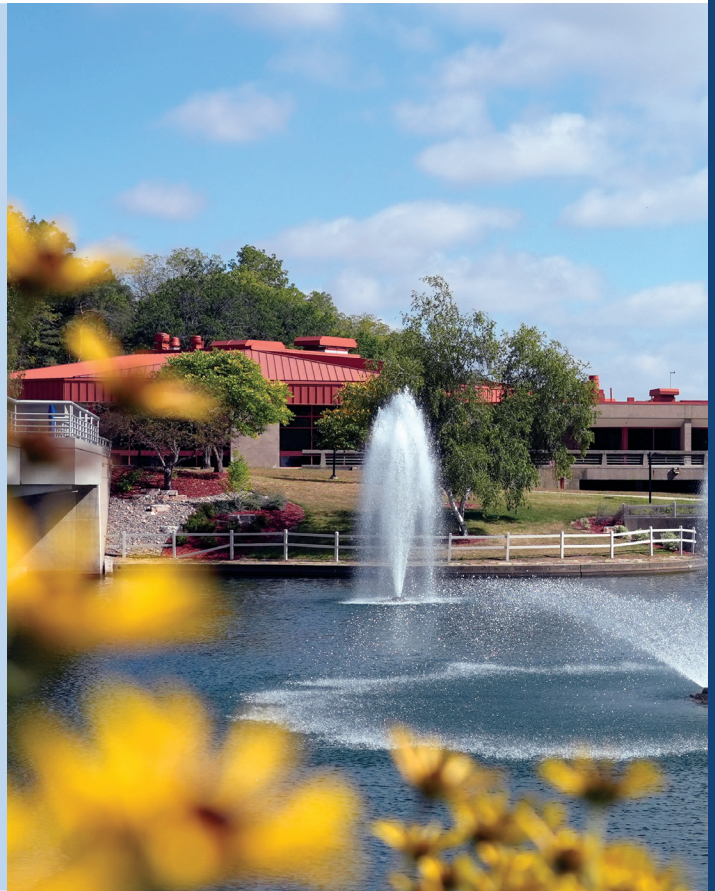


“ I am truly grateful...This scholarship means so much to my family as I work toward becoming a first-generation college graduate.”

Criminal Justice Studies student  
Charles “Chuck” Case Memorial Scholarship recipient

“ It’s not just financial help, it’s **hope, encouragement** and a powerful reminder that **I’m not alone in this journey.**”

Business Management student  
Allan and Mildred Steele Scholarship recipient



“ It’s an honor to walk into the Harry V. Quadracci building every day knowing that I am now a representative of his legacy and support.”

Graphic Design student  
Harry V. Quadracci Scholarship recipient

# The **PHILLIPS** Leadership Award



2024 Winner:

**Thomas  
Dalum**

The 2024 Phillips Leadership Award was presented to Thomas (Tom) Dalum, retired owner of DUECO, past Foundation board member, volunteer and long-time supporter of the College. Through his leadership and partnership, Tom has made significant contributions that have strengthened programs within the School of Applied Technologies, workforce development efforts and other key initiatives.

Tom's commitment to the College has also extended through his company, where the next generation of his family continues to champion the mission. Over the years, they have built upon his legacy, further strengthening their impact on the institution. People like Tom leave a lasting imprint on the

fabric of the College and the opportunities it creates for students every day.

The Phillips Leadership Award, created in 2024, is named in honor of Ellen Phillips, the Foundation's past president who dedicated 27 years of service to the organization. During her tenure, Ellen played a pivotal role in building the Foundation's scholarship programs and was known for her grit, determination, compassion and deep commitment to supporting students and the College.

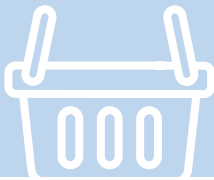
The award recognizes individuals who demonstrate exceptional leadership and a strong commitment to advancing the Foundation's mission.



# WCTC Campus Cupboard

An Essential Resource for Students

Written by Michael Lango, Ed.D., Associate Vice Provost, Student Affairs



The WCTC Campus Cupboard (free food pantry) continues to be an essential resource for students, helping address food insecurity so they can focus on what matters most: their academics. During the 2024–25 academic year, usage of the Campus Cupboard increased by 33% compared to the previous year, underscoring both the growing awareness of the resource and the real need it continues to meet. When students don't have to worry about where their next meal is coming from, they're better positioned to stay engaged in class, persist through challenges and succeed academically.

That impact would not be possible without the strong partnership between WCTC and the WCTC Foundation, whose generous monetary and food donations help keep the cupboard stocked year-round.

**“We are incredibly grateful to the WCTC Foundation for their ongoing support. Their commitment to addressing food insecurity directly supports our students' ability to thrive, both inside and outside the classroom.”**

**Dr. Michael Lango, Ed.D.**  
Associate Vice Provost, Student Affairs

In response to increased student demand, WCTC is planning to expand the Campus Cupboard to a second location at the Waukesha Campus, ensuring even greater access to this vital resource.



Click to donate to  
**the Campus Cupboard**

# NAMED SCHOLARSHIPS EASE FINANCIAL BURDEN

WCTC offers scholarships in nearly every program area, and the benefits to students are many. These gifts allow students to focus on their studies and reduce financial burden.



Nearly **70%** of applicants are awarded a WCTC Foundation scholarship.

Awards range from **\$250** to **\$2,500 and beyond.**

The average scholarship gift is **\$500.**

A gift of **\$5,000 or more** will establish a named scholarship.

Please visit [wctc.edu/foundation](http://wctc.edu/foundation) for more information.

# WAYS TO GIVE

As a donor, there are a number of ways to give:

## SCHOLARSHIPS

General scholarships supporting students across multiple programs

Named scholarships established by individuals, families or organizations

## LEGACY/PLANNED GIFTS AND BEQUESTS

Gifts made through wills, trusts or estate plans

Beneficiary designations through retirement accounts or life insurance

## ADVISED FUNDS

Donor-directed funds that allow flexible support for priority areas

Opportunities to recommend support for programs, scholarships or student initiatives

## TARGETED DONATIONS

Technology, equipment and academic support

Capital campaigns designed to expand and improve campus facilities

## CREATING AN ENDOWMENT

Permanent funds that generate annual support for students and program

Named endowments create a lasting legacy of giving with the WCTC Foundation

**A gift to WCTC is an investment in education and the success of our students.**

All charitable contributions to the WCTC Foundation are tax deductible. WCTC is grateful to our alumni, donors and friends for their generous support.



**DONATE  
ONLINE**



WCTC offers more than **170 programs** for students. Your donations help us keep up with instructional needs across the board.



Contributions to our capital campaigns enable us to **expand and improve campus facilities** to better serve our students and community.



Your donations provide essential funding for the **growth and sustainability** of the WCTC Foundation, ensuring we can continue to fulfill our mission and respond to emerging needs.

# WCTC Foundation Financial Overview



## 2024-25

### STATEMENT OF FINANCIAL POSITION

#### ASSETS

Current Assets	\$833,087
Investments	\$9,229,052
Other Assets	\$356,372
<hr/>	
<b>Total Assets</b>	<b>\$10,418,511</b>

#### LIABILITIES

Liabilities	\$20,356
Net Assets	\$10,398,155
<hr/>	
<b>Total Liabilities and Net Assets</b>	<b>\$10,418,511</b>

**512**

SCHOLARSHIPS  
AWARDED

**332**

STUDENTS  
AWARDED

**\$671**

AVERAGE AWARD  
PER SCHOLARSHIP

**151**

DIFFERENT  
SCHOLARSHIP  
FUNDS

**\$343,625**

TOTAL  
FOUNDATION  
SCHOLARSHIPS  
AWARDED

### STATEMENT OF ACTIVITIES

#### SUPPORT AND REVENUE

Contributions	\$646,532
Capital Campaign	\$919,244
Investment Income	\$750,869
Direct-to-Student Scholarships	\$223,990
In-Kind Contributions	\$95,387
<hr/>	
<b>Total Revenue</b>	<b>\$2,636,022</b>

#### EXPENSES

Scholarships and Grants	\$489,127
Direct-to-Student Scholarships	\$222,787
Management and General	\$267,590
Program, In-Kind, Other	\$99,997
<hr/>	
<b>Total Expenses</b>	<b>\$1,079,501</b>



## THANK YOU TO OUR DONORS

Thank you to all our donors for their continued generous support of the WCTC Foundation's mission and goals. Without your support, we would not be able to offer scholarships to our students, enhance WCTC's educational programs or support WCTC's institutional advancement.



**WCTC  
FOUNDATION**

800 Main Street | Pewaukee, WI 53072

**OFFICE** 262.691.5202

**EMAIL** [foundation@wctc.edu](mailto:foundation@wctc.edu)

**WEB** [www.wctc.edu/foundation](http://www.wctc.edu/foundation)