



# Size, Weight, & Load

Wisconsin Chapter 348





# Class “A” Highways - 348.15(1)



- All roads are Class “A” unless
- Posted as Class B or
- Special or Seasonal Weight Limitations





# Class “A” Highways - 348.15(1)



No person, without a permit, may operate on a class “A” highway any vehicle or combination of vehicles unless the vehicle or combination complies with the following weight limitations:





# Class “A” Highways - 348.15(3)(a)



Gross weight imposed on a single axle on a single side may not exceed 11,000 pounds.

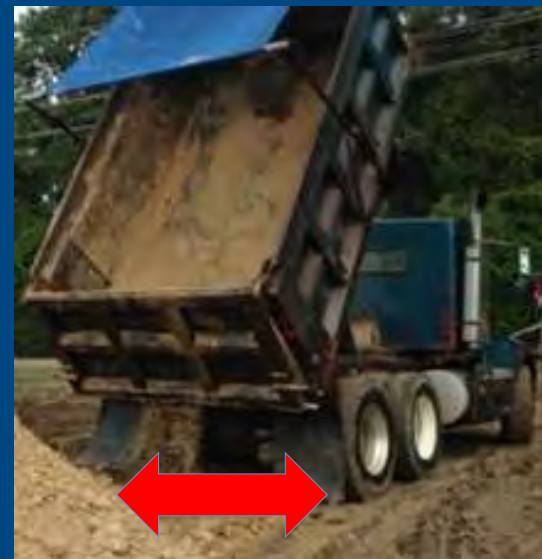




# Class “A” Highways - 348.15(3)(b)



Generally one axle may not exceed  
20,000 pounds





# Class “A” Highways - 348.15(3)(b)



If vehicle or combination of vehicles is an  
Implement of Husbandry or an Ag CMV

- Single axle may not exceed 23,000 pounds





# Class “A” Highways - 348.15(3)(b)



Steering axle may not exceed 13,000 pounds unless tires are rated for higher weight

- Up to 20,000 pounds





# Class “A” Highways - 348.15(3)(bg)



Vehicle or combination of vehicles exclusively milk

- Single axle 21,000 pounds
- 2 axles 8' or less apart, 37,000 pounds

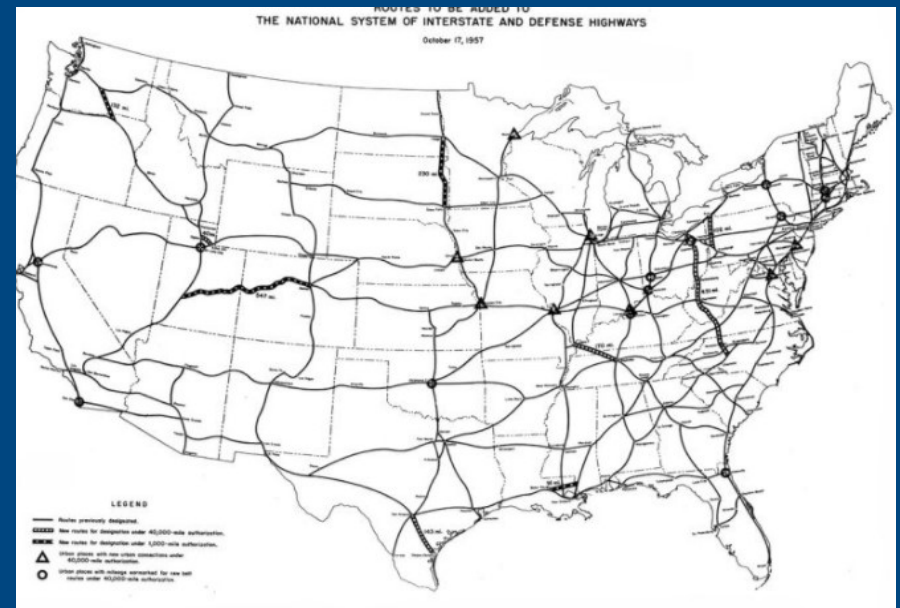




# Class “A” Highways - 348.15(3)(bg)



- 3 or more axles more than 9'
  - 348.15(3)(c) + 2,000 pounds
- Not to exceed 80,000 pounds
- Not on the Interstate





# Class “A” Highways - 348.15(3)(br)



Vehicle or combination transporting exclusively peeled or unpeeled forest products cut crosswise, or combination of vehicles transporting exclusively scrap metal

- Single axle 21,500 pounds
- 2 axles 8' or less apart, 37,000 pounds

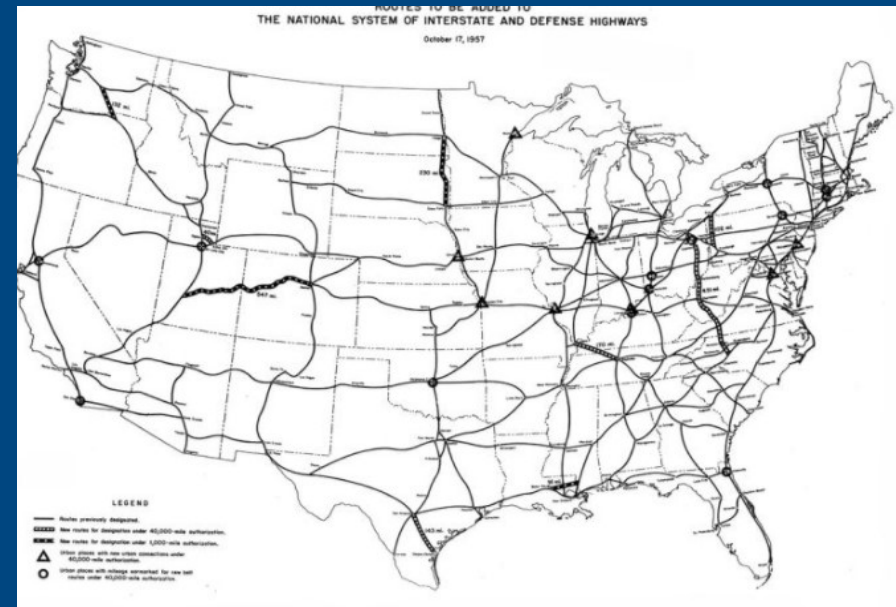




# Class “A” Highways - 348.15(3)(br)



- 3 or more axles more than 9'
  - 348.15(3)(c) + 4,000 pounds
- Not to exceed 80,000 pounds
- Not on the Interstate





# Class "A" Highways - 348.15(3)(c)



**MAXIMUM WEIGHT LIMITATIONS CHART**  
Combination of Vehicles

- Column **A** - Distance in Feet between foremost and rearmost axles of a group  
 Column **B** - 2 consecutive axles of any combination of vehicles having a total of 3 or more axles  
 Column **C** - 3 consecutive axles of any combination of vehicles having a total of 4 or more axles  
 Column **D** - 4 consecutive axles of any combination of vehicles having a total of 5 or more axles  
 Column **E** - 5 consecutive axles of any combination of vehicles having a total of 6 or more axles  
 Column **F** - 6 consecutive axles of any combination of vehicles having a total of 7 or more axles  
 Column **G** - 7 consecutive axles of any combination of vehicles having a total of 8 or more axles  
 Column **H** - 8 consecutive axles of any combination of vehicles having a total of 9 or more axles

Maximum Gross Weight in Pounds on a Group of Axles

A - Feet	B - 2 axles	C - 3 axles	D - 4 axles	E - 5 axles	F - 6 axles	G - 7 axles	H - 8 axles
4	34,000						
5	34,000						
6	34,000						
7	34,000	37,000					
7.5-8	35,000	38,500					
8.1-8.4	36,000	42,000					
9	39,000	43,000					
10	40,000*	43,500	48,500				
11		44,500	49,500				
12		45,000	50,000				
13		46,000	50,500	62,500			
14		46,500	51,500	62,500			
15		47,500	52,000	62,500			
16		48,000	52,500	62,500			
17		49,000	53,500	63,200	64,000		
18		49,500	54,100	64,400	65,000		
19		50,500	55,100	65,000	65,500		
20		51,500	56,000	65,700	66,000		
21		52,200	56,800	66,900	66,900	73,000	

Instructions: Use this chart to determine maximum gross weight in pounds, on a group of axles for a combination of vehicles, on Class "A" highways. See examples of combination of vehicles below:

- \* Maximum at 10 or more feet between axles  
 \*\* Maximum at 32 or more feet between axles  
 \*\*\* Maximum at 34 or more feet between axles  
 \*\*\*\* Maximum at 51 or more feet between axles

**MAXIMUM WEIGHT LIMITATIONS CHART**  
Vehicle Not In Combination

- Column **A** - Distance in Feet between foremost and rearmost axles of a group  
 Column **B** - 2 consecutive axles: of a 2-axle vehicle;  
 OR of any vehicle having a total of 3 or more axles  
 Column **C** - 3 consecutive axles: of a 3-axle vehicle;  
 OR of any vehicle having a total of 4 or more axles  
 Column **D** - 4 consecutive axles: of a 4-axle vehicle;  
 OR of any vehicle having a total of 5 or more axles  
 Column **E** - 5 consecutive axles: of a 5-axle vehicle;  
 OR of any vehicle having a total of 6 or more axles  
 Column **F** - 6 consecutive axles of any vehicle having a total of 6 or more axles  
 Column **G** - 7 consecutive axles: of a 7-axle vehicle;  
 OR of any vehicle having a total of 7 or more axles  
 Column **H** - 8 consecutive axles: of an 8-axle vehicle;  
 OR of any vehicle having a total of 8 or more axles

Maximum Gross Weight in Pounds on a Group of Axles

A - Feet	B - 2 axles	C - 3 axles	D - 4 axles	E - 5 axles	F - 6 axles	G - 7 axles	H - 8 axles
4	34,000						
5	34,000						
6	34,000						
7	34,000	37,000					
7.5-8	35,000	38,500					
8.1-8.4	36,000	42,000					
9	39,000	42,000					
10	40,000*	43,500					
11		44,500					
12		45,000	55,500				
13		46,000	60,000				

Instructions: Use this chart to determine maximum gross weight in pounds, on a group of axles for a vehicle not in combination, on Class "A" highways. See examples of vehicles below.

- \* Maximum at 10 or more feet between axles  
 \*\* Maximum at 32 or more feet between axles  
 \*\*\* Maximum at 34 or more feet between axles

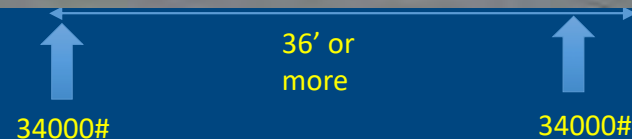




# Class “A” Highways - 348.15(3)(d)



Two consecutive sets of tandem axles 36' or more may impose 68000#





# Class “A” Highways - 348.15(3)(d)



Combination vehicles hauling exclusively livestock

- Gross weight imposed single axle 15%
- Gross weight imposed by group of axles 15%
- May not exceed maximum gross weight in 348.15(c)
- Not on the Interstate



This group gets an additional 15%

This axle gets an additional 15%





# Class “A” Highways - 348.15(f)



Heavy duty vehicle with idle reduction technology gets

- An extra 550# or
- The weight of the idle reduction technology
- Whichever is less
- HD vehicle = GVWR > 8,500lbs & powered by diesel engine





# Class “A” Highways - 348.15(h)



A natural gas vehicle may exceed the applicable weight limitation specified in pars. (a) to (c) or (g) by no more than 2000#





# Class “A” Highways - 348.15(h)



Increase in weight is not allowed for the accumulation of snow, mud, or dirt.





# Class “A” Highways - 348.15(5m)



Axles shall be measured between axle centers

- To the nearest even foot
- Round up when the fraction is exactly  $\frac{1}{2}$  foot





# Class “A” Highways - 348.15(5r)



- Results of weighing by either Portable Scales or Stationary Scales shall be considered evidence.
- ~~• Vehicle weighed on a certified stationary scale with axles less than 6' apart shall be weighed as one unit.~~





# Class “A” Highways - 348.15(8)



- If an axle is not carrying 8% of the gross weight that axle shall not count.
- Is axle 2 a conforming axle?



36000#



4500#



17500#





# Class “B” Highways - 348.16(1)



A Class B highway includes County Trunk Highways, Town Highways, and City and Village Streets which has been designated by local authorities.



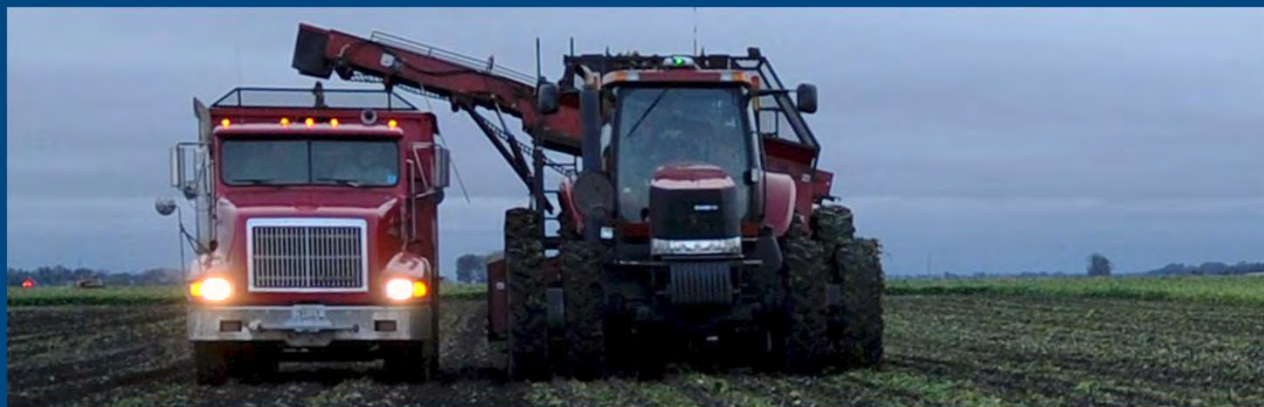


# Class “B” Highways - 348.16(2)



60% of the weights authorized under 348.15(3)

*This subsection does not apply to IOH or Agricultural Commercial Vehicle being operated or transported.*





# Class “B” Highways - 348.16(2)



Vehicles that pickup or deliver on a Class B Highway may pickup or deliver without complying with 348.16(2).





# Special or Seasonal Limitations- 348.17(1)



No person, whether operating under a permit or otherwise may operate a vehicle in violation of a special weight limitations as posted by State or local authorities





# Special or Seasonal Limitations- 348.17(5)



From August 1 to December 31 of each year, no permit shall be required for transportation of Corn, Soybeans, Potatoes, Vegetable or Cranberries from field to storage on the growers owned or leased land...



...continued





# Special or Seasonal Limitations- 348.17(5)



...from field to initial storage not owned by the grower, or field to initial processing, for a vehicle or combination of vehicles by **15%** authorized in 348.15(3)...



...continued





# Special or Seasonal Limitations- 348.17(5)



Satisfies the following:

- Registered for 50000# or more
- Is a motor truck, farm truck, road tractor, truck tractor, or farm truck tractor, or such vehicle combined with a semitrailer, trailer, or farm trailer.
- Not on the Interstate





# Special or Seasonal Limitations- 348.17(6)



From September 1 to December 31 of each year, no permit shall be required for transportation of manure to and from a farm...



...continued





# Special or Seasonal Limitations- 348.17(6)

For a vehicle or combination of vehicles by 15% authorized in 348.15(3)

- Registered for 50000# or more
- Is a motor truck, farm truck, road tractor, truck tractor, or farm truck tractor, or such vehicle combined with a semitrailer, trailer, or farm trailer.
- Not on the Interstate





# Frozen Roads - 348.175



Vehicles hauling peeled or unpeeled forest products cut crosswise or abrasives or salt used for high winter maintenance:

- Extra weight
  - When the frozen road declaration is in affect
  - Declaration shall include the maximum weight on each axle, combination of axles, and the gross weight allowed





# Publicly-Owned Vehicles – 348.18



Weight limits apply to vehicles owned by the state, a county, or municipality, except when removing snow, or treating roadways, or when such vehicles are authorized emergency vehicles.





# Authority to Weigh – 348.19(1)



Every traffic officer has the authority to stop any vehicle he/she believes is overweight. Operator of such vehicle is required weigh or drive to nearest usable scale.



...except





# Authority to Weigh – 348.19(1)(b)



Peeled or unpeeled forest products cut crosswise shall not be ordered to a scale unless they are within 1 mile of the scale or calculated estimate is over legal weight.





# Authority to Weigh – 348.19(2)(a)



If the weight exceeds limitations in Chapter 348, operator is not allowed to proceed unless directed by a traffic officer to a safe location, until such load is reloaded or offloaded.



...except





# Authority to Weigh – 348.19(2)(a)



For vehicles transporting livestock, if the weight exceeds limitations in Chapter 348 and vehicle is within 15 miles of destination, it will be allowed to proceed without offloading or reloading.





# Overweight Citations– 348.20



Overweight citations are generally issued to the carrier. Driver shall accept the citation on behalf of the carrier or owner.





# Reload Law – 348.20



If overload is not over gross and is over by 2000 lbs or less, vehicle may be reloaded within normal load carrying areas to make legal. No citation will be issued.

If load cannot be made legal, carrier will be cited and allowed to proceed.





# Penalties – 348.21



Overweight by 1,000 lbs or less:

- First Offense: \$50.00 plus costs (total \$200.50)
- Second Offense within 12 months: \$100.00 plus costs (total \$263.50)





# Penalties – 348.21



## Overweight by more than 1,000 lbs:

- First Offense: \$50.00 to \$200.00 plus costs, and:
  - 1 cent per pound up to 2000 lbs
  - 3 cents per pound between 2000 and 3000 pounds
  - 5 cents per pound between 3000 and 4000 lbs
  - 8 cents per pound between 4000 and 5000 lbs
  - 15 cents per pound over 5000 lbs



2500 lbs over = \$303.00  
5500 lbs over = \$1248.00  
10,500 lbs over = \$2199.00  
15,500 lbs over = \$3151.75





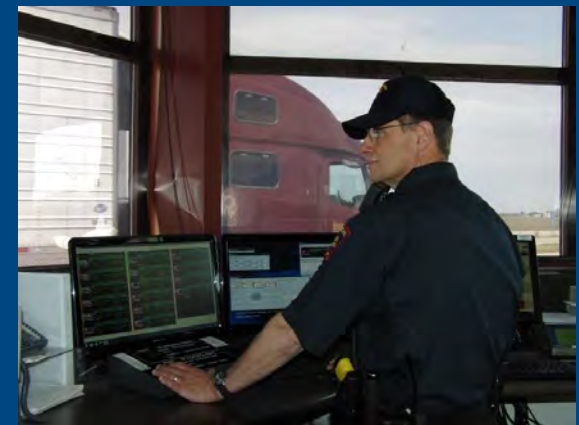
# Penalties – 348.21



## Overweight by more than 1,000 lbs:

- Second Offense within 12 months: \$100.00 to \$300.00 plus costs, and:
  - 2 cents per pound up to 2000 lbs
  - 5 cents per pound between 2000 and 3000 pounds
  - 8 cents per pound between 3000 and 4000 lbs
  - 12 cents per pound between 4000 and 5000 lbs
  - 18 cents per pound over 5000 lbs

2500 lbs over = \$429.00  
5500 lbs over = \$1519.80  
10,500 lbs over = \$2662.80  
15,500 lbs over = \$3805.80





# Penalties – 348.21



## Raw Forest Products more than 1,000 lbs:

- First or Second Offense in 12 months: \$150.00 to \$250.00 plus costs, and:
  - 6 cents per pound up to 2000 lbs
  - 8 cents per pound between 2000 and 3000 pounds
  - 9 cents per pound between 3000 and 4000 lbs
  - 10 cents per pound between 4000 and 5000 lbs
  - 11 cents per pound over 5000 lbs

2500 lbs over = \$586.50  
5500 lbs over = \$1096.80  
10,500 lbs over = \$1792.85  
15,500 lbs over = \$2491.35





# Penalties – 348.21



## Raw Forest Products more than 1,000 lbs:

- Third Offense in 12 months: \$500.00 to \$550.00 plus costs, and:
  - 20 cents per pound up to 3000 lbs
  - 21 cents per pound between 3000 and 4000 lbs
  - 22 cents per pound between 4000 and 5000 lbs
  - 23 cents per pound over 5000 lbs

2500 lbs over = \$1405.50  
5500 lbs over = \$2377.05  
10,500 lbs over = \$3837.55  
15,500 lbs over = \$5298.05





# Width of Vehicles- 348.05(1)



No person without a permit therefor shall operate on a highway any vehicle having a total width in excess of **8 feet 6 inches**, except as otherwise provided in this section.





# Height of Vehicles- 348.06



Except as provided in subs. (2) and (2m), no person, without a permit therefor, may operate on a highway any motor vehicle, mobile home, trailer, or semitrailer having an overall height in excess of **13 1/2 feet**.





# Length of Vehicles - 348.07(2)(f)



No overall length limitation for a tractor-semitrailer combination, a double bottom or an automobile haulaway when such tractor-semitrailer combination, double bottom or automobile haulaway is operated on a highway designated under sub. (4).





# Length of Vehicles - 348.07(2)(f)

No length limitation for a truck tractor or road tractor when such truck tractor or road tractor is operated in a tractor-semitrailer combination or as part of a double bottom or an automobile haulaway on a highway designated under sub. (4).





# Length of Vehicles - 348.07(2)(f)(s)



**75 feet** for a tractor-semitrailer combination that is operated on any highway, except as provided in par. (f) or sub. (4m).





# Length of Vehicles - 348.07(2)(gm)



**28 feet 6 inches** for a semitrailer or trailer operated as part of a double bottom on a highway designated under sub. (4).

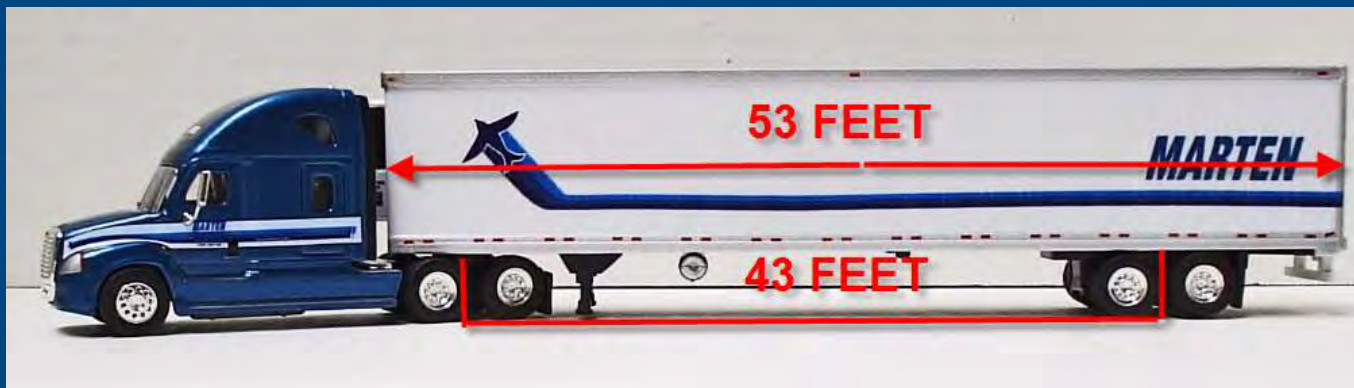




# Length of Vehicles - 348.07(2)(gv)



**53 feet** for a semitrailer whose length from kingpin to axle does not exceed **43 feet** and which is operated as part of a 2-vehicle combination, except as provided in par. (gr) or sub. (4m). The length limits in this paragraph do not apply to a trailer or a semitrailer that is authorized to operate under par. (im).





# Length of Vehicles - 348.07(3)(b)(1)



Except as provided in subd. 2., the length of a semitrailer or trailer shall be measured from the front thereof to the rear of the semitrailer or trailer or cargo, whichever is longer, excluding bumpers, stake pockets, air deflectors and refrigeration units.





# Length of Vehicles - 348.07(4)

## DESIGNATED HIGHWAYS

Wisconsin Legislature: 348.07(4)





# Length of Vehicles - 348.07(4m)



## RESTRICTED TRUCK ROUTES (Certain State Trunk Highways)

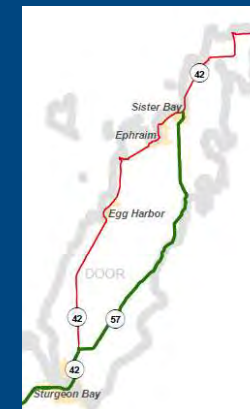
Wisconsin Legislature: 348.07(4m)

Wisconsin Legislature: Trans 276.065



— Long Truck Route  
— 75' Restricted Truck Route\*  
— 65' Restricted Truck Route\*\*

\* 53' trailer, 43' king pin to rear axle, no double bottoms  
\*\* 48' trailer, no double bottoms





# IRP Registration IFTA Fuel Tax License

- 30 Air mile Reciprocity Agreement only applies to registration & fuel tax
  - Minnesota, Iowa, & Michigan(Michigan IFTA raw forest products only)

## DOES NOT APPLY TO:

- Authority
- CDL/CDL Restrictions
- Medical Cards







Motor Carrier Information Line: 608-267-9762

