



# Dual Enrollment Academy

FOR HIGH SCHOOL SENIORS

## Information Meetings



**WCTC's Dual Enrollment Academy** is designed to give high school seniors a jump start in high-demand occupations, awarding participants with a WCTC certificate/technical diploma upon successful completion along with earning high school credits. High school students will spend the majority of their school day, both the fall and spring semesters of their senior year, at WCTC participating in the Dual Enrollment Academy. Attend one of these information meetings to discover how the Dual Enrollment Academy can help students succeed in their dream career.

### Program Options Offered

- Automation Systems Technology/Robotics
- Building Construction Trades
- Hospitality Specialist
- IT Systems Specialist
- Protective Services
- Tool and Die/CNC
- Welding/Fabrication

### Eligibility Requirements

Students must:

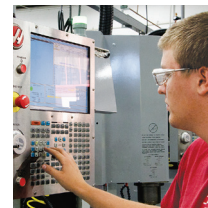
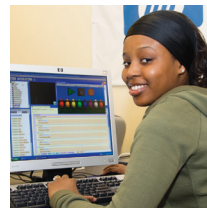
- Be **2017-18 SENIORS**.
- Have a minimum of a **2.0 GPA**.
- Be in good academic standing in high school.
- Acknowledge and sign FERPA statement.
- Meet WCTC entrance requirements.
- Submit ACT test scores. Program-specific ACT or Accuplacer placement test scores are required.

(High school and parent/guardian approval needed.)

*Information Meetings and Lab Tours*  
5:30 – 7:30 p.m.

- **THURSDAY, FEBRUARY 15, 2018**
- **WEDNESDAY, FEBRUARY 28, 2018**

**Waukesha County Technical College**  
Richard T. Anderson Education Center  
800 Main Street, Pewaukee



Visit [www.wctc.edu/dual-enroll](http://www.wctc.edu/dual-enroll) for information regarding WCTC Dual Enrollment Academy eligibility requirements, application process and deadlines.



**WAUKESHA**  
COUNTY TECHNICAL  
COLLEGE

[www.wctc.edu](http://www.wctc.edu)

Waukesha County Technical College does not discriminate on the basis of race, color, national origin, sex, sexual orientation, disability or age in employment, admissions or its programs or activities. The following position has been designated to handle inquiries regarding the College's non-discrimination policies: Compliance Officer, 800 Main Street, Pewaukee, WI 53072 or 262.695.3481 or [compliance@wctc.edu](mailto:compliance@wctc.edu).

**Questions?** Contact Sandra Maylen, Coordinator, Early College Opportunities at **262.691.5591** or [smaylen@wctc.edu](mailto:smaylen@wctc.edu)