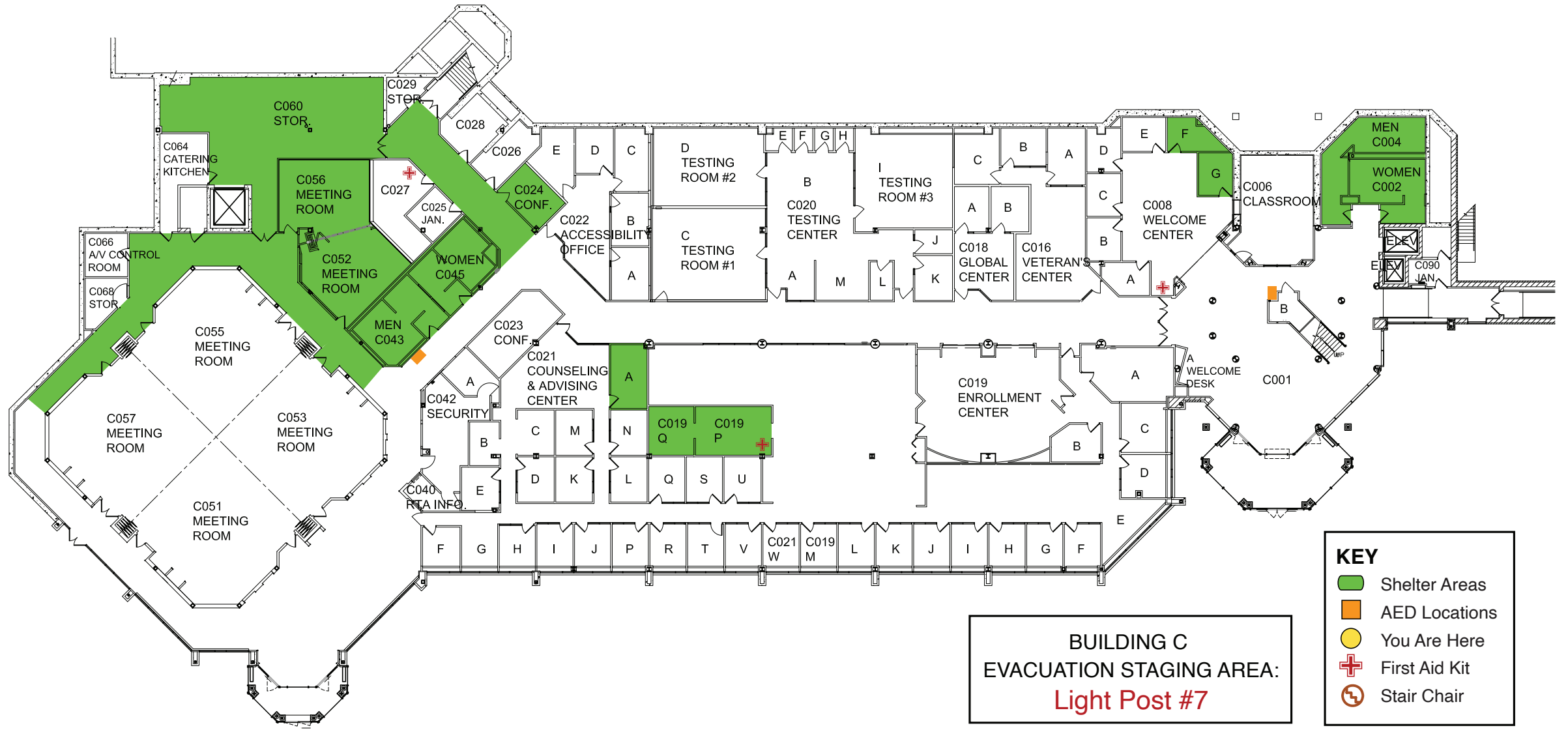


Emergency Evacuation Map

In an Emergency call 911 for Police, Fire and Medical Assistance



KEY

- Shelter Areas
- AED Locations
- You Are Here
- First Aid Kit
- Stair Chair

BUILDING C
EVACUATION STAGING AREA:
Light Post #7



LOWER LEVEL & RICHARD T. ANDERSON CENTER COLLEGE CENTER